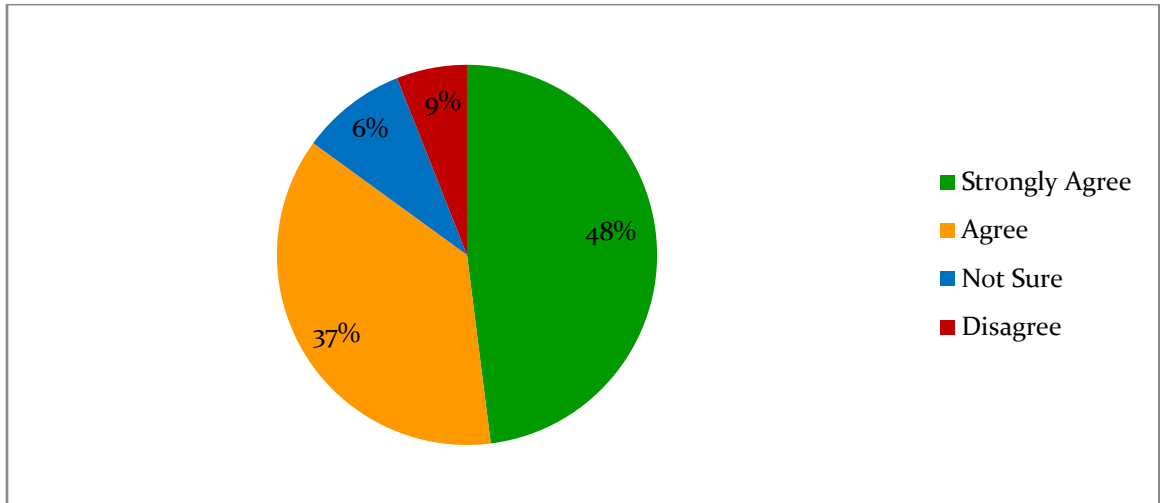


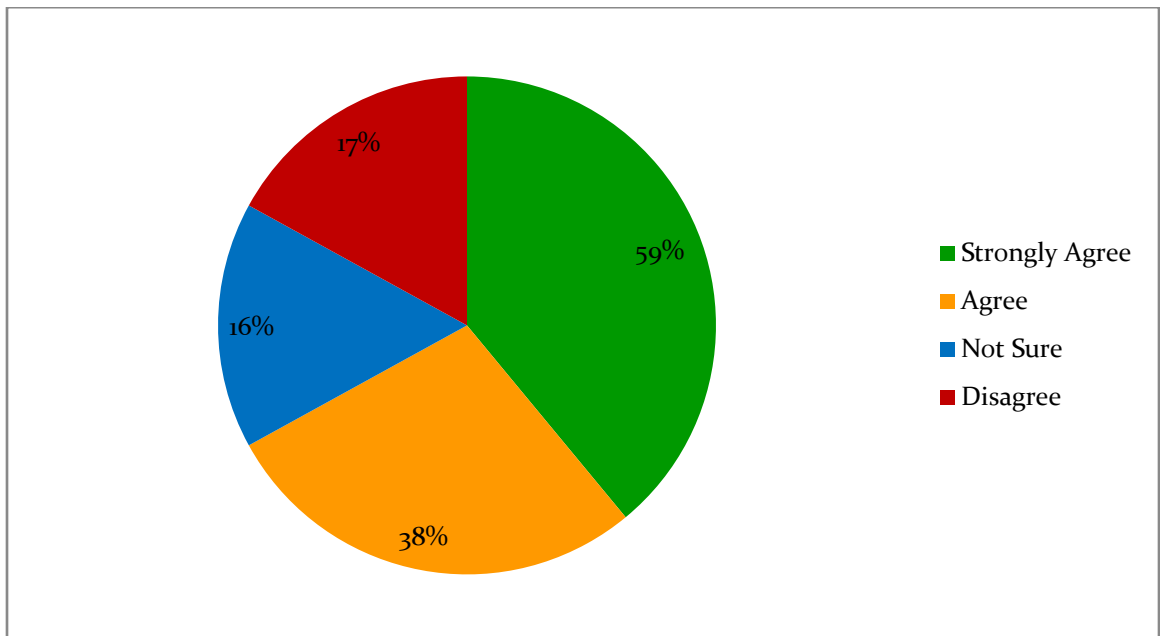
# Rameshwari Devi Girls College, Bharatpur (Raj.)

## Consolidated Student's Feedback Report -2020-21 M.A.

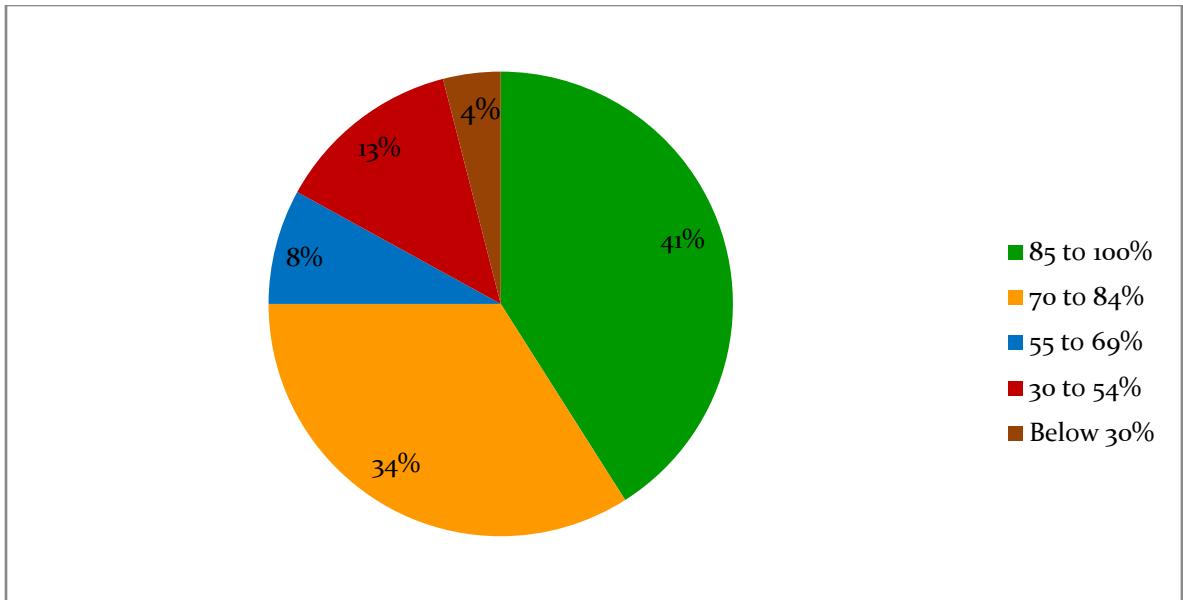
1. Curriculum is designed for employability and guidance of students :



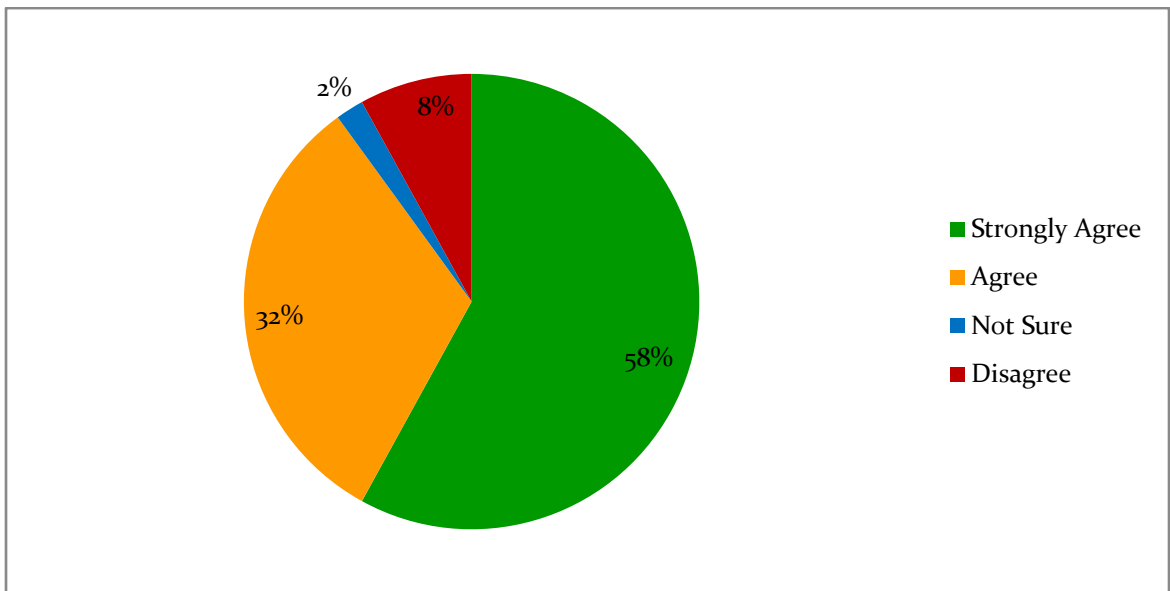
2. The Courses studied by students and the contents are revised at reasonable intervals.



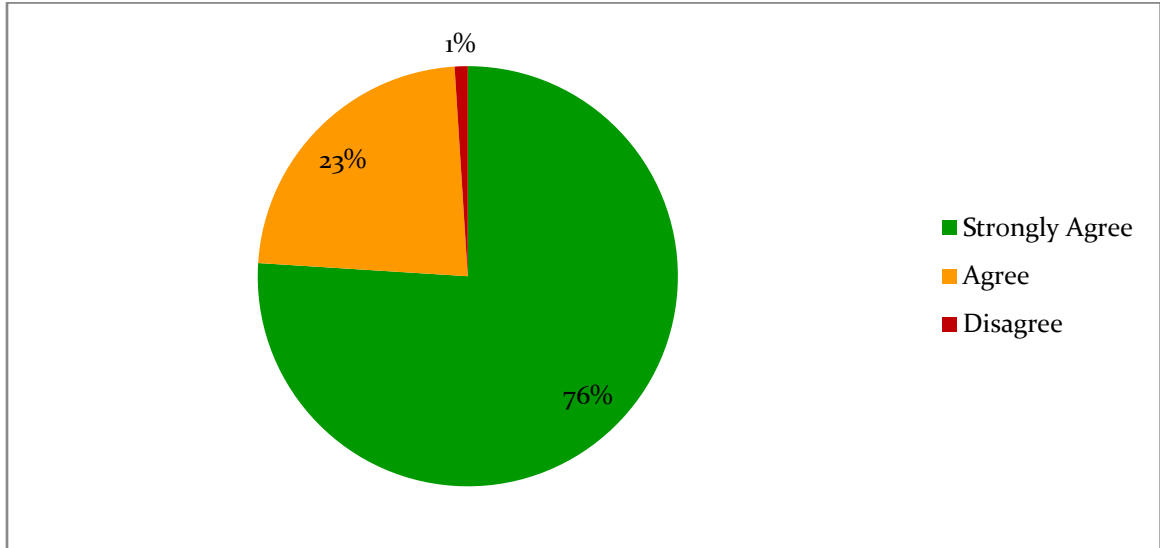
3. Syllabus is completed in time.



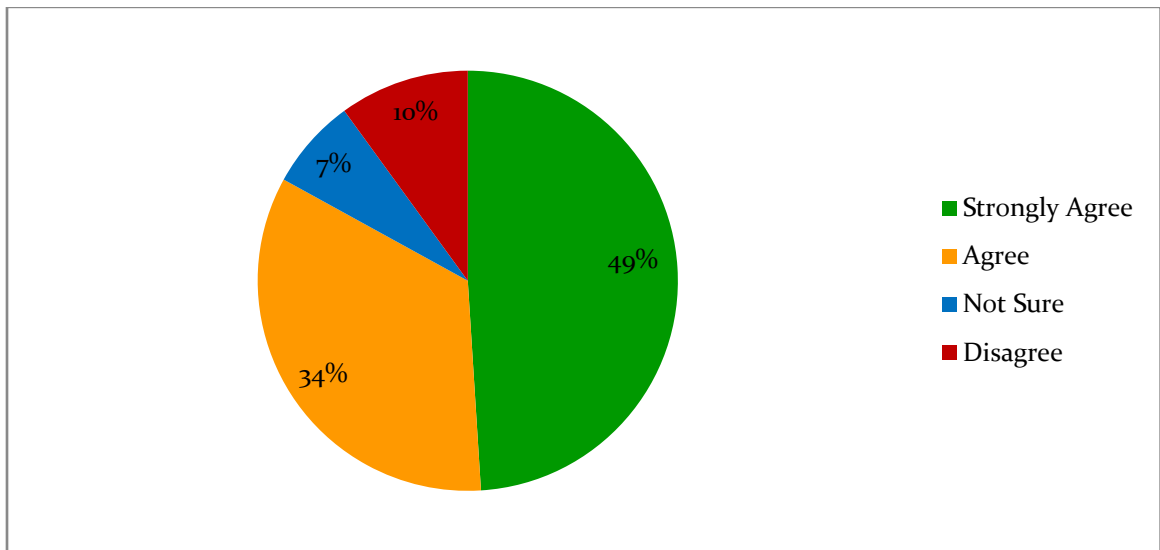
4. Modern Teacher Aids, PowerPoint Presentation, Web-Resources, Multi-media, E-contents etc. are used by most of the teachers, while teaching.



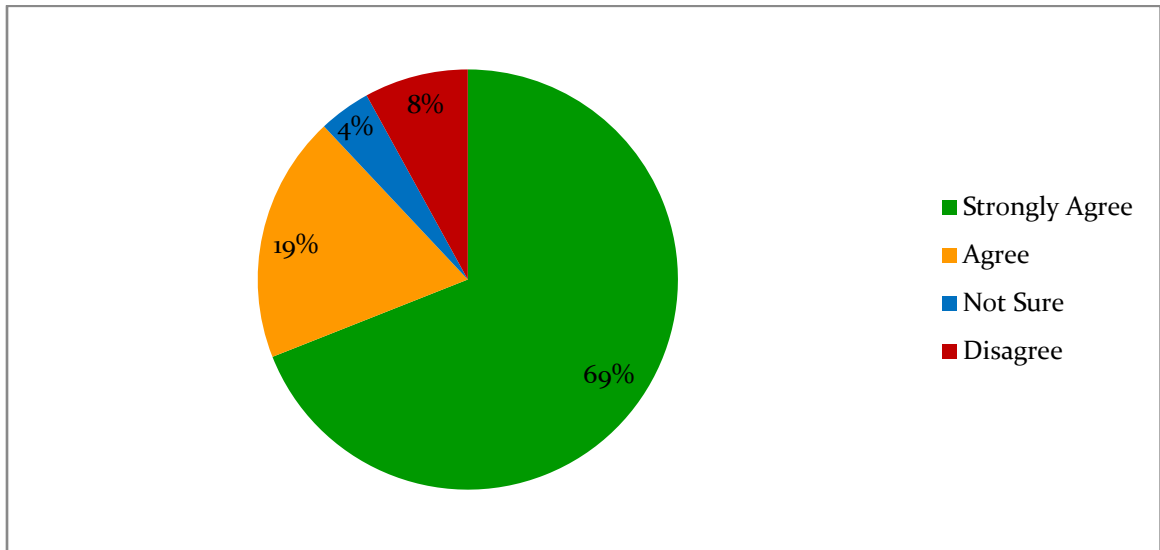
5. Teachers Guide to the students for overall personality development of the students.



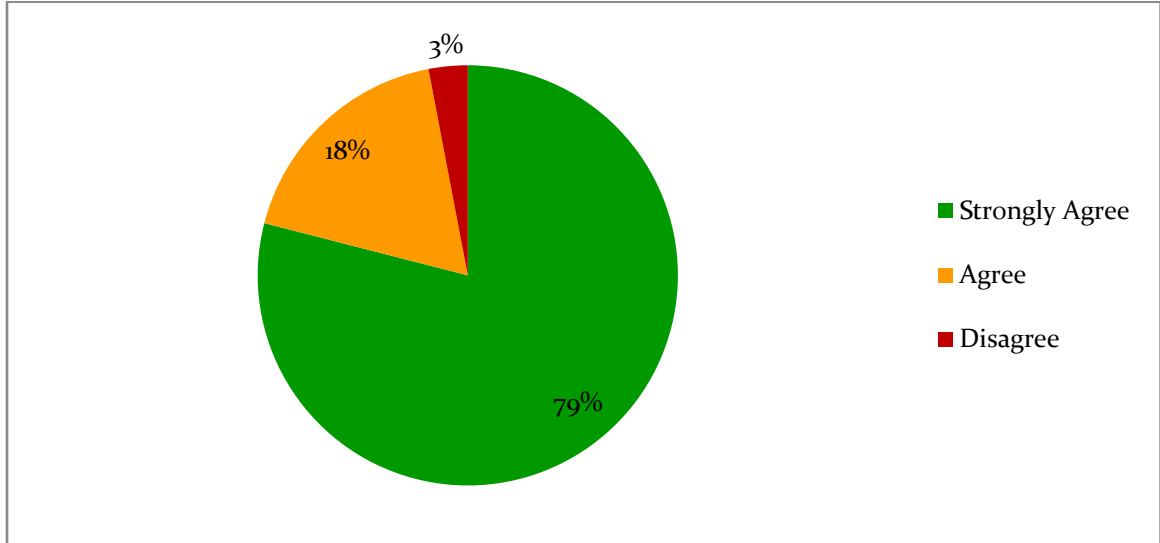
6. Teachers give regular and timely feedback on the performance of the students.



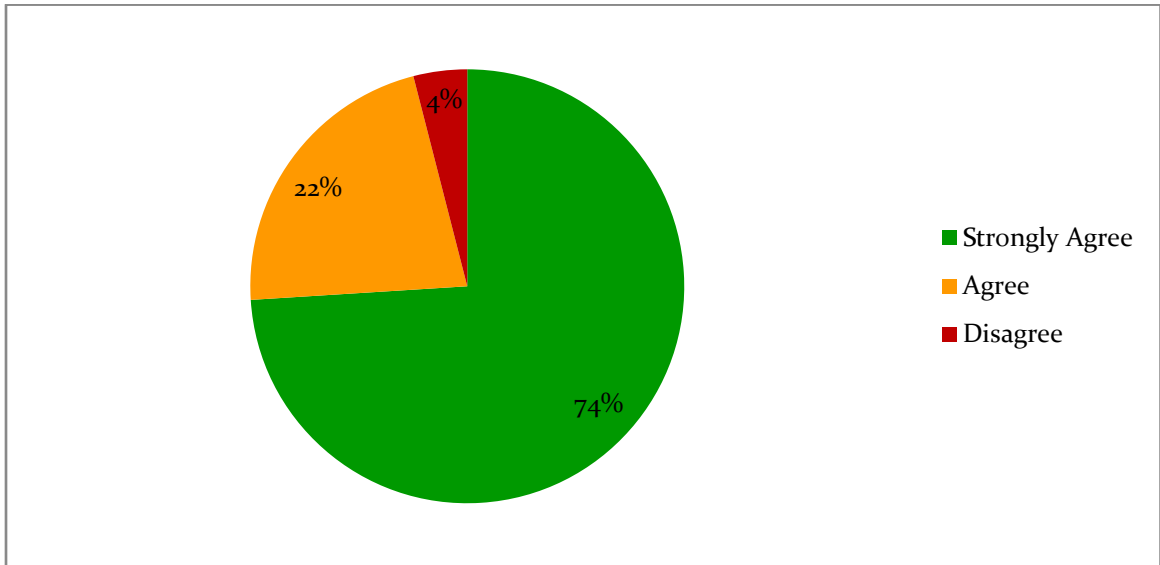
7. The Assessment and evaluation process is fair and unbiased.



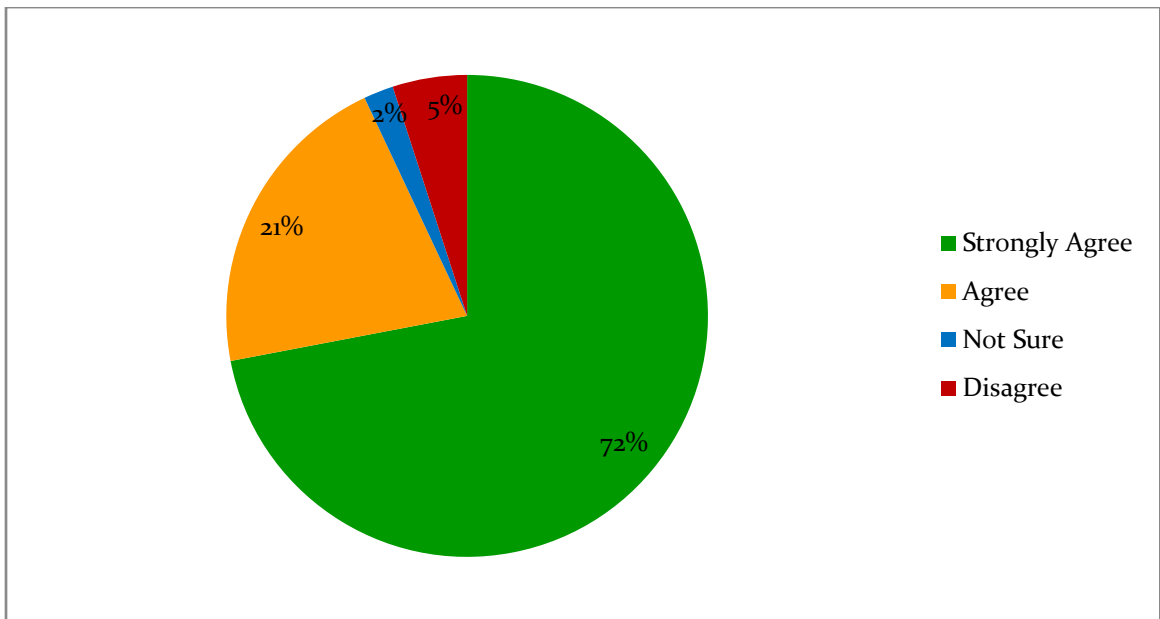
8. The Teachers encourage the student to participate in Extra-curriculum, Co-curriculum activities and research-



9. The Teachers encourage the student to use reference books, e-resources, e-journals etc.



10. Teachers take efforts to enhance employability skills in the students.



11. The Teachers usually do the necessary follow-up with a task assign to their mentee.

